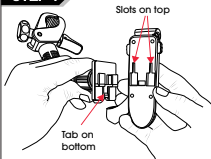


INSTRUCTIONS

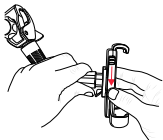
Installation video and support at
<https://www.sheerliving.com>

STEP 1



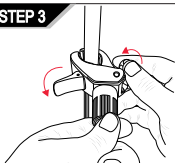
Hold gooseneck and phone holder in the orientation as shown.

STEP 2



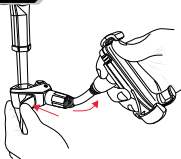
Match tabs of gooseneck to slots of the phone holder and pull down on phone holder until you hear a click.

STEP 3



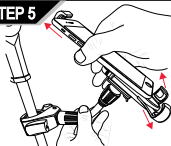
Loosen clamp knob until it fits on the pole. Tighten knob until you feel minimal resistance.

STEP 4



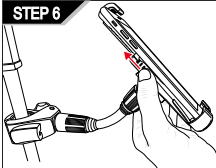
Push tab down to secure. Adjust gooseneck to desired position.

STEP 5



Pull bottom corner holders apart. Push up on top of holder with phone and place phone in corner holders. Adjust as necessary.

STEP 6



Optional: Push up on both side tabs at once to lock the phone in place.